



COMSEARCH
A CommScope Company

Join the
Evolution



iQ-link[®] Services

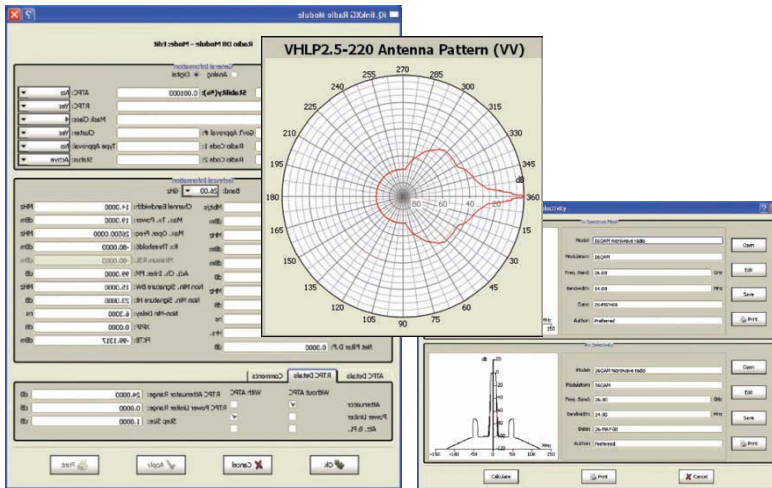
A Formula for Success

- Database Management (DM)
- Server Maintenance (SM)
- Equipment and Network Audit (ENA)
- Network Upgrade and Spectrum Analysis (NUA)

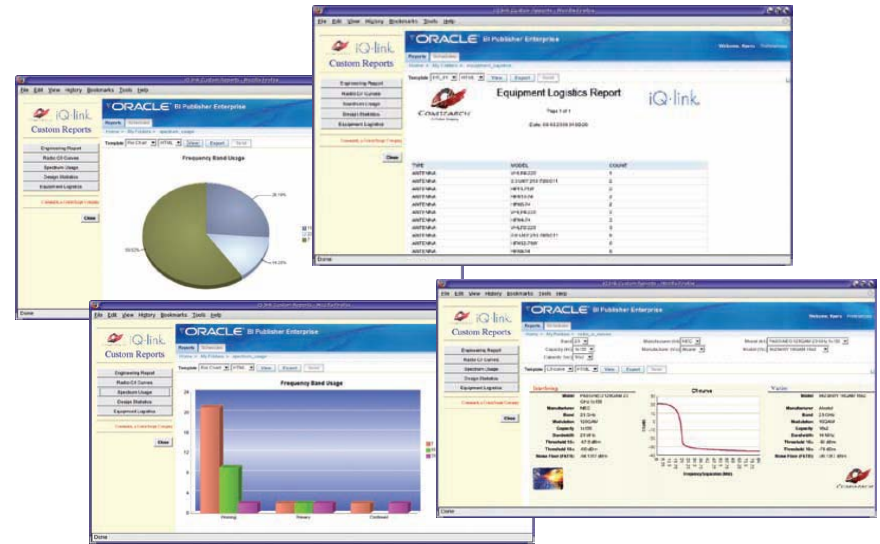


COMSEARCH
A CommScope Company

- **Ensure your valuable data is current and accurate.**
 - Equipment import for both radios and antennas and calculation of interference matrices.
 - Database cloning to allow for scenario planning.
 - Import links including sites, equipment, frequency plans, etc.
 - Database backups and synchronization.
 - User-defined reports and exports.

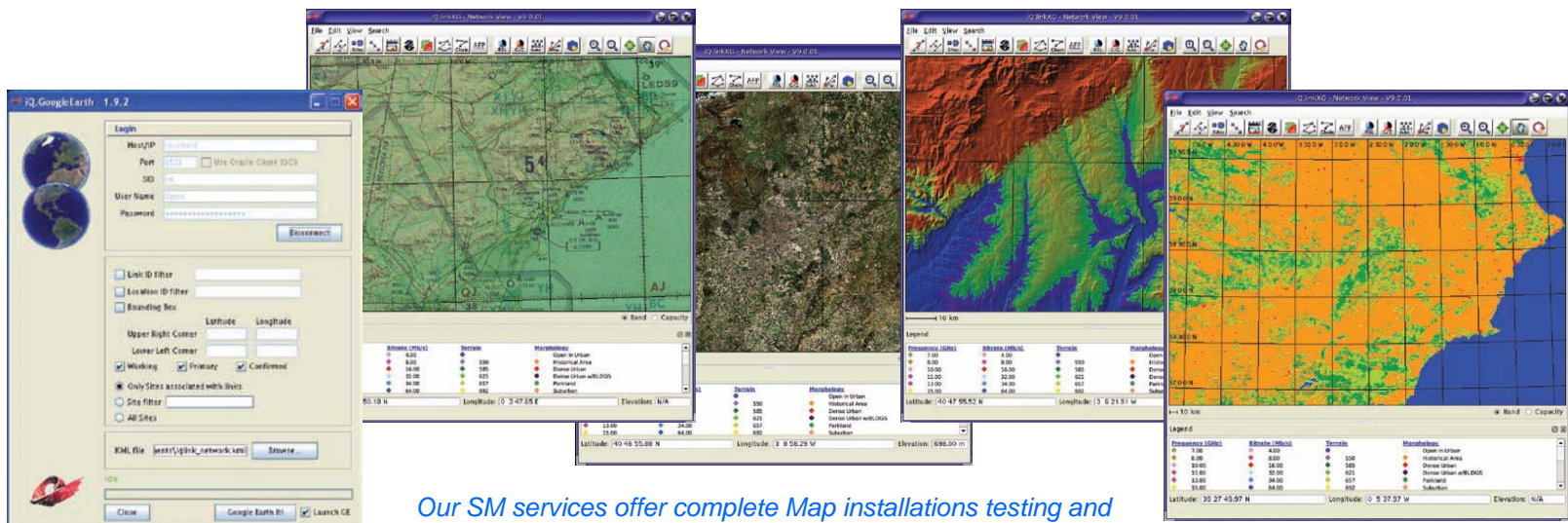


Easily Import all types of equipment data including Radios (including C/I and/or IRF matrices), Antennas, Waveguides, and Attenuators.



Create customized reports using Microsoft®, Access, Excel, or even Oracle® BI publisher.

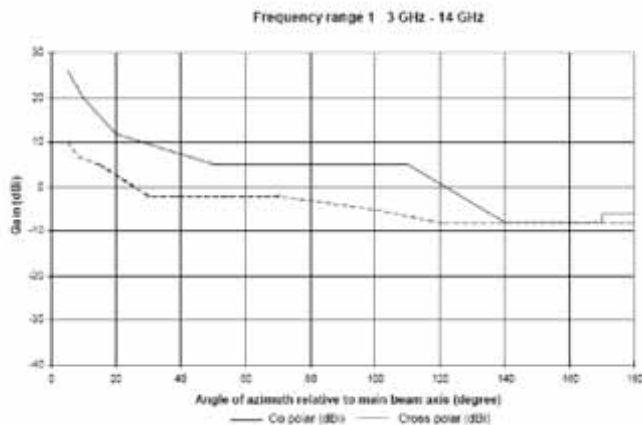
- **Maintain peak performance of your microwave planning investment.**
 - Current upgrades of your server, iQ-link® installation, operating system, database and maps.
 - Complete management of back-ups, disaster recovery and server replacements.
 - Customise iQ-link's installation for your particular needs.
 - Coordinate installations and upgrades with your IT department.



Our SM services offer complete Map installations testing and configuration including optional updates for site coordinates when changing map references (e.g. International 1924/ED50 to WGS84).

- **Realize the full potential of your planning.**
 - Radio audit, evaluating technical radio data including interference matrices, comparison with ETSI standards and impact of any change on entire network interference and spectrum usage.
 - Antenna audit, making sure the correct radiation patterns are being used, comparison with ETSI standards and impact of any required changes on entire network interference and spectrum usage.
 - Physical and functional network audit where the main goal is to make sure what's in iQ-link® reflects reality.

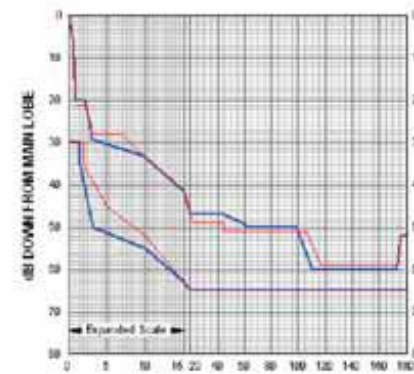
Detailed antenna equipment audit with an RPE comparison between actual and manufacturer data.



Radiation Pattern Envelope
Antenna Type Number: PDL10-107 RPE 3187C
10.00 Foot Antenna 10.700 11.700 GHz Dual Polarized
Gain: +8.20 dB at 11.20 GHz
Engineering Approved: 6 December 1971

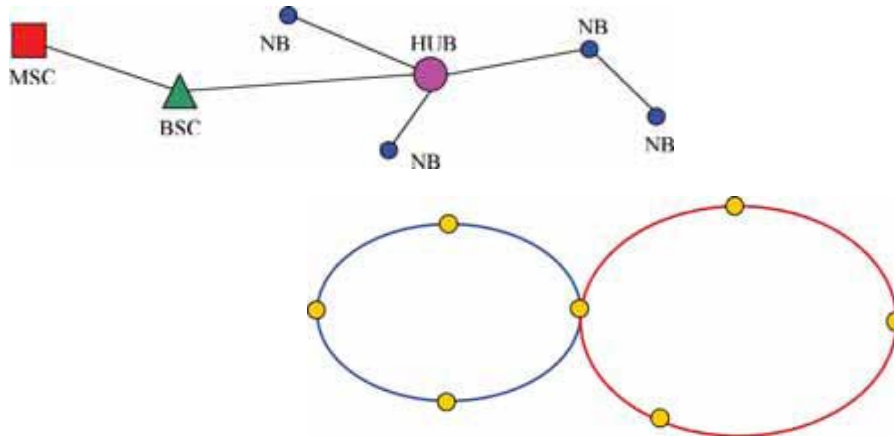


— Envelope for a horizontally Polarized Antenna (Hx, Hv)
— Envelope for a vertically Polarized Antenna (Vx, Vh)



COMSEARCH
A CommScope Company

- Analyze and upgrade the capacity of your network.**
 - Hierarchy extraction based on specified main nodes with consideration for rings.
 - Link capacity assignment.
 - Adherence to ITU availability and performance objectives.
 - Detailed interference analysis with High/Low conflict resolution for optimum use of spectrum.
 - Detailed reports include requirements for additional spectrum and antenna upgrades.



Extraction of hierarchy based on specified main nodes (concentration points, hubs, etc.) and consideration of ring topologies.

Objective	TOTAL	99.999 %	99.995 %	99.990 %	< 99.990 %
Total connectivity	711	711	640	743	1
Percentage connectivity	100	90.15%	88.75%	104.5%	0.14%
Count	711	711	640	743	1
Percentage	100.00%	100.00%	90.15%	104.50%	0.14%



Once the analysis has been conducted, detailed technical reports are produced to suit your needs.

Maximize productivity.

Minimize errors.

Lower OpEx and IT Costs.

Think about it:

- Servers and databases—current, clean, and optimized.
- Planning data—verified, synchronized, and ready for use.
- Distractions and interruptions—virtually eliminated.

All thanks to an experienced partner who knows that maintaining your system and the integrity of your data is every bit as important as the network planning itself.



COMSEARCH®

A CommScope Company



- Questions
- Comments
- Suggestions



COMSEARCH[®]
A CommScope Company

Sales

Bruce Eley
iQ-link Strategic Business Manager
Mobile: +44 7824619441
bruce.eley@andrew.com

Marketing

Jeanette Carlisle
Embedded Marketing Manager – ACVA
Office: +1.703.726.5744
Mobile: +1.703.568.7011
jeanette.carlisle@andrew.com

Business Development

Brian Eichenser
Director, Business Development
Office: +1.703.726.5750
brian.eichenser@andrew.com

Product Development

Steve Meador
Manager, Product Development
Office: +1.703.726.5717
steve.meador@andrew.com

Sales/Marketing Materials

- [iQ.link Sales Portfolio Kits](#)

Available for download from the CommScope® Intranet.

- [iQ.link Services Brochures](#)

Available for download from the Comsearch® Web Site.





COMSEARCH
A CommScope Company

Join the
Evolution



iQ-link® Services

A Formula for Success